

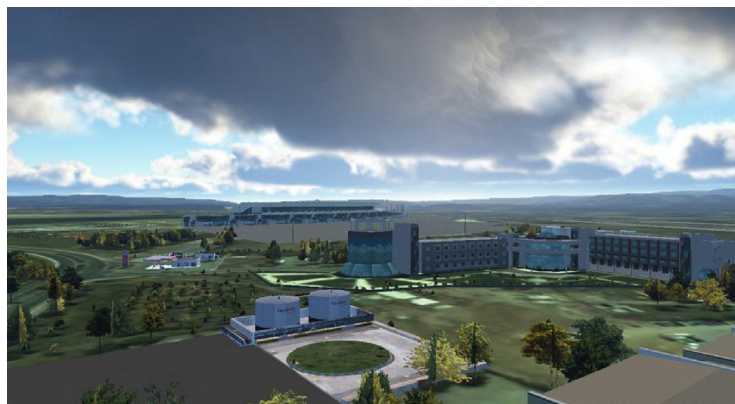
# ATC SIMULATOR & 3D TWR

## Comprehensive solution for ACC, APP and TWR training

- » Accurate copy of ATCO's workplace, authentic work situations
- » Modern preparations of lessons, sophisticated exercise settings

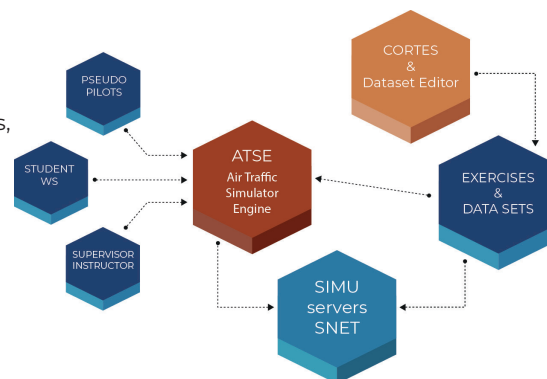
### 3D TWR

- » Visualization up to 360 degrees
- » 3D visualization solution is provided in cooperation with NITA company through integration with visualization software module



## TECHNICAL FEATURES

- » Variable use for ACC (including multisector), APP or TWR including ground movements.
- » Simulations include flight plan, aircraft technical parameters and meteorological data.
- » The simulator also features recording of the exercise, evaluation and replay.
- » Perfect for all kinds of training: ab initio, follow-up, advanced radar, retaining programs, examination practice.
- » The simulator can perform exercises with various levels of difficulty and number of generated aircrafts.
- » ATC Simulator provides information of both static character (AIP, maps, ICAO doc., RTF bank, locations, etc.), dynamic character (weather, NOTAMs, meteorological news, restricted airspace, etc.)
- » Simulator solution can be installed on different HW using different SW configurations according to user's needs.
- » ATC simulator also supports the following advanced training features: SYSCO, Datalink (CPDLC), MONA, ground movement control, equipped with interface to VCS.
- » Exercise preparation HMI also enables import of real traffic data (FPL) and its modification for the purpose of simulation, pre-simulation of the preparing exercise with function of modification data during the pre-simulation to achieve very precise exercise scenario.
- » The simulator consists of: ATSE, FDPS, Recording & Replay, SafetyNets and several kinds of HMI - CWS (student), PseudoPilot, Instructor, Supervisor and also exercise and dataset preparation HMI (CORTES).
- » ATC simulator is equipped with the interface to VCS.



## USER FEATURES

### Wide range of exercise settings

Number of parameters of aircraft; flight plans; actual flight routes; landing and take-off behaviour; selected weather situations & simulations.

### Setting of various ATCO training area

The simulator enables setting of whatever airport or air traffic area if airport plans or area data/maps are imported. Introducing students to the 4D image.

### Record and replay

The simulator also features recording of the exercise. The evaluation and replay could be performed when the current exercise is paused or from the archive.

### Highly modifiable CWS

Thanks to wide configurability, the HMI can be easily customized and adapted faithfully to a lifelike ATC environment. Electronic strips display.

### Training variability

The simulator can perform exercise with different number of generated aircrafts and different level of difficulty; starting from the easiest, over to more complicated, up to critical situation management.