

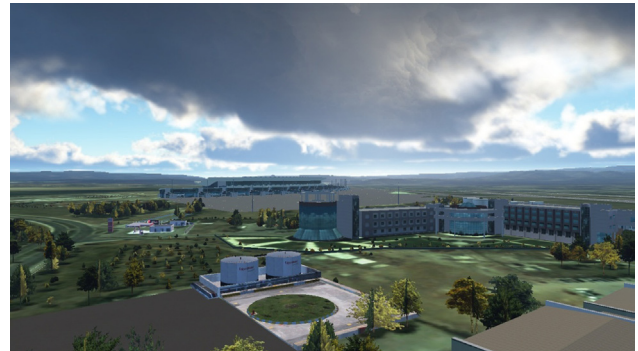
ATC SIMULATOR & 3D TWR

Comprehensive solution for ACC, APP and TWR training

- » Accurate copy of ATCO's workplace, authentic work situations
- » Modern preparations of lessons, sophisticated exercise settings

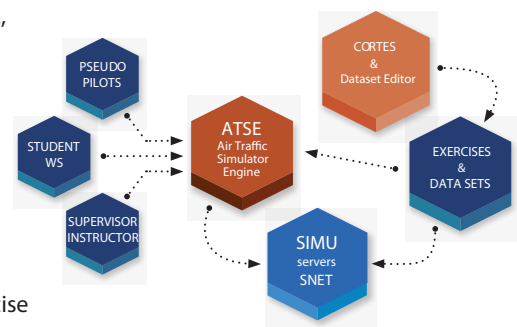
3D TWR

- » Visualization up to 360 degrees
- » 3D visualization solution is provided in cooperation with NITA company through integration with visualization software module



TECHNICAL FEATURES

- » Variable use for ACC (including multisector), APP or TWR including ground movements.
- » Simulations include flight plan, aircraft technical parameters and meteorological data.
- » The simulator also features recording of the exercise, evaluation and replay.
- » Perfect for all kinds of training: ab initio, follow-up, advanced radar, retaining programs, examination practice.
- » The simulator can perform exercises with various levels of difficulty and number of generated aircrafts.
- » ATC Simulator provides information of both static character (AIP, maps, ICAO doc., RTF bank, locations, etc.), dynamic character (weather, NOTAMs, meteorological news, restricted airspace, etc.).
- » Simulator solution can be installed on different HW using different SW configurations according to user's needs.
- » ATC simulator also supports the following advanced training features: SYSCO, Datalink (CPDLC), MONA, ground movement control, equipped with interface to VCS.
- » Exercise preparation HMI also enables import of real traffic data (FPL) and its modification for the purpose of simulation, pre-simulation of the preparing exercise with function of modification data during the pre-simulation to achieve very precise exercise scenario.
- » The simulator consists of: ATSE, FDPS, Recording & Replay, SafetyNets and several kinds of HMI – CWS (student), PseudoPilot, Instructor, Supervisor and also exercise and dataset preparation HMI (CORTES).
- » ATC simulator is equipped with the interface to VCS.



USER FEATURES

Wide range of exercise settings

Number of parameters of aircraft; flight plans; actual flight routes; landing and take-off behaviour; selected weather situations & simulations.

Setting of various ATCO training area

The simulator enables setting of whatever airport or air traffic area if airport plans or area data/maps are imported. Introducing students to the 4D image.

Record and replay

The simulator also features recording of the exercise. The evaluation and replay could be performed when the current exercise is paused or from the archive.

Highly modifiable CWS

Thanks to wide configurability, the HMI can be easily customized and adapted faithfully to a lifelike ATC environment. Electronic strips display.

Training variability

The simulator can perform exercise with different number of generated aircrafts and different level of difficulty; starting from the easiest, over to more complicated, up to critical situation management.

CUSTOMER REFERENCE



Czech Air Navigation Institute (Air Navigation Services), Czech Republic, Prague
ATC Simulator ACC/APP/TWR installed 2014, extended 2015, upgraded 2016